

**HEALTH PROGRESS AND PERFORMANCE REVIEWS  
Analysis Methods and Tools**

**Workshop  
Cape Town, South Africa, October 11-15 2010**

**WORKSHOP REPORT**

**World Health Organization  
In collaboration with Africa Population & Health Research Centre, ICF Macro,  
GAVI, Global Fund, USAID and the Rockefeller Foundation**

**Background**

Many countries have made considerable progress in using data to inform decision-making processes such as annual health sector reviews, mid-term reviews and evaluations. National authorities have expressed the need to enhance their own analytical capacities to carry out comprehensive assessments of progress and performance. In the context of the MDGs and health systems strengthening, there is increased demand for results that demonstrate the impact of investments. This has led to considerable reporting demands on countries. Strengthening the analytical capacity of countries should contribute to one sound national platform for monitoring progress and performance, from which global reporting will draw. Country annual and other health reviews should also form the basis for all global reporting requirements.

There is substantial global investment in monitoring progress against health goals. WHO, UNICEF, other international organizations and research institutions produce estimates for MDGs and other key health indicators based on available data using a variety of methods to correct for data deficiencies, impute missing values and predict values for future years. The results are made available in peer-reviewed publications and global databases. For some health indicators, such as HIV prevalence and child mortality, tools and methods are sufficiently well explained to enable countries to reproduce or recalculate the estimates made at the global level. In general, however, access to methods, tools and results is piecemeal and country use and ownership is limited.

Several global partners are collaborating to support countries in order to improve data access and analysis, address data gaps and build institutional capacity, based upon the Country Health Systems Surveillance platform (CHeSS). The main goal of CHeSS is to improve the availability, quality and use of the data needed to inform country health sector reviews and planning processes, and to monitor health progress and system performance. Such improvements should be supported in a way that strengthens global monitoring, including reporting of global goals and results of health investments, while minimizing the reporting burden for countries.

## Objectives of the workshop

To enhance the analytical capacity of countries to conduct comprehensive health progress and performance reviews in the context of national health plans and related global health goals.

## Participants

A total of thirteen countries participated in the workshop: Angola, Botswana, Gambia, Ghana, Lesotho, Liberia, Mozambique, Namibia, Nigeria, Sierra Leone, South Africa, Swaziland and Zimbabwe. The country delegations consisted of a mix of people from ministries of health, statistics offices, research organizations and WHO country offices. Other participants included facilitators and representatives from international organizations and research institutions including African Population and Health Research Center (APHRC), Centers for Disease Control (CDC), GAVI, the Global Fund, Health Systems Trust (HST), ICF Macro, John Snow International (JSI), Save the Children, WHO, and UNICEF. A complete list of participants is included in Annex A.

## Structure and Content

The workshop was structured with sessions in plenary and small group discussions. Several sessions were structured through a market place approach in which participants were required to select sessions of interest to attend. Country delegations were requested to divide themselves in such a manner that each session had at least one person from each country, to provide country delegations with exposure to all tools.

The tools were presented according to where they fit in the monitoring and evaluation (M&E) framework and how they structure around the contents of national health sector reviews. Figure 1 presents the tools mapped on to the M&E framework.

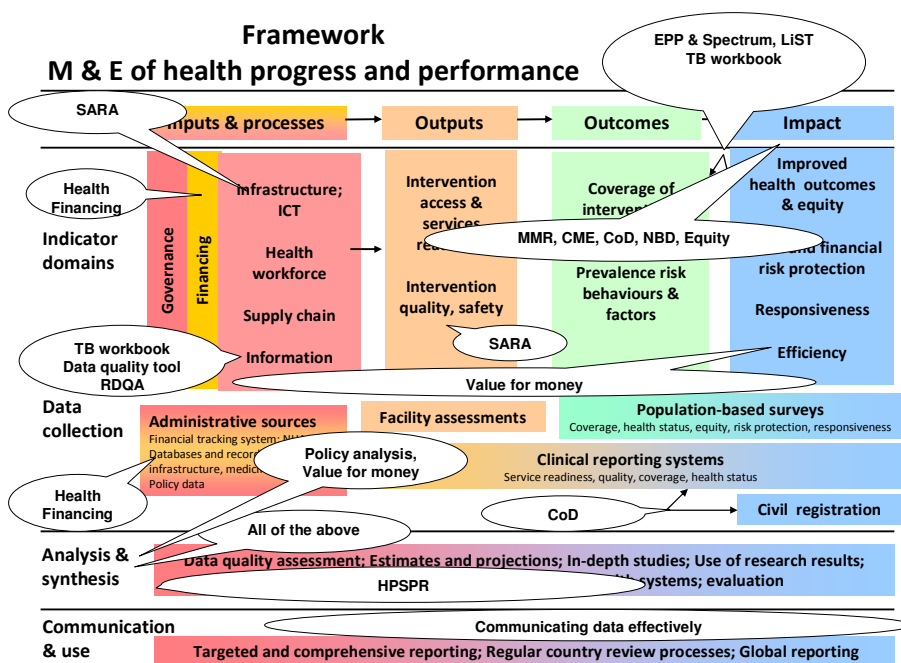


Figure 1: Tools and M&E framework

The materials presented in the course of the 5-day workshop were highly diverse. The tools and concepts were broadly divided into the following categories: General epidemiological context, inputs and outputs, measuring coverage of interventions with health facility data, estimation of key health impact indicators, equity analysis, health progress and systems performance review, policies and value for money, and communication of data. Within these broad categories, a total of 15 tools and concepts were presented. The list of tools in each category is presented below in Table 1. Some tools have been fully tested and are available for immediate use; others are in the developmental stage. The agenda for the workshop is included in Annex B.

Table 1: Materials presented during the workshop

<ul style="list-style-type: none"> <li>• General epidemiologic context <ul style="list-style-type: none"> <li>○ National Burden of Disease</li> <li>○ Mortality and Cause of Death</li> </ul> </li> <li>• Inputs and outputs <ul style="list-style-type: none"> <li>○ Health financing</li> <li>○ Service readiness and quality</li> </ul> </li> <li>• Measuring coverage of interventions with health facility data (looking at quality of data) <ul style="list-style-type: none"> <li>○ Data quality assessment and adjustment tool (DQAA)</li> <li>○ Routine data quality assessment (RDQA)</li> </ul> </li> <li>• Estimation of key health impact indicators <ul style="list-style-type: none"> <li>○ Maternal mortality (MMR)</li> <li>○ Epidemic Projection Package (EPP) for HIV/AIDS</li> <li>○ Tuberculosis Workbook</li> <li>○ Child Mortality Estimates (CME)</li> <li>○ Lives Saved Tool (LiST)</li> </ul> </li> <li>• Equity analysis <ul style="list-style-type: none"> <li>○ HD Calc - An equity tool</li> </ul> </li> <li>• Health Progress and Systems Performance Review <ul style="list-style-type: none"> <li>○ A quantitative tool to measure performance</li> </ul> </li> <li>• Policies and value for money</li> <li>• Communication of data</li> </ul>
---

A USB key with key information on all the above tools, other relevant documents, presentations and exercises included in the workshop was given to each participant. Information was organized by daily sessions. Figure 2 presents a selection of the information included in the USB key. The USB key provided the participants with materials both directly used in sessions as well as additional information and software to access at the participant convenience. A number of the presentations and supplemental materials were updated or added during the workshop sessions. The final complement of tools and resources were made available on the desktop computers in the workshop plenary room. A CHeSS website is under development. Many of the presentations and key documents will be available on this website. Once completed, the website address will be shared with all participants.

Country specific documents such as annual health sector reviews, country data, population projections, statistical abstracts and surveys were included for each of the 13 countries.



Each session included separate sub-folders on key documents, exercises and applications, presentations and supporting



**Information, Evidence and Statistics**

**The foundation for Public Health Decision-Making**

Health progress and performance reviews

Analysis methods and tools

Workshop

Cape Town, South Africa

October 11-15 2010

- Table of contents
- Day 1 - Session 1 - Introduction
  - Core Indicators
  - Exercises\_Applications
  - Key documents
  - Objective and Agenda of Workshop
  - Presentations
  - Supporting documents
- Day 1 - Session 2 - General epidemiological context
  - Burden of Disease
  - Mortality and Causes of Death
- Day 2 - Session 3 - Inputs and outputs
  - Health Financing
  - Human Resource
  - Service Readiness
- Day 2 - Session 4 - Quality of health facility data
  - Data Quality Assessment and Adjustment
  - Routine Data Quality Assessment
- Day 3 - Session 5 - Estimation of health impact indicators
  - Child Mortality
  - HIV
  - LiST
  - Maternal Mortality
  - TB
- Day 4 - Session 6 - Equity
- Day 4 - Session 7 - Country performance assessment
- Day 5 - Session 8 - Policy analysis and value for money
- Day 5 - Session 9 - Communicating results

Figure 2: Contents of the USB Key

## **Evaluation Results**

Participants were requested to evaluate each session in the workshop. A pre and post-workshop knowledge and skills self-assessment were also conducted. The results of the evaluations are presented in Annex C.

In the pre-evaluation, participants were asked to rank their own skill and knowledge of the different subject areas covered in the workshop. The results of the pre-evaluation are shown in Figures 1 and 2 in Annex C. Participants rated themselves as better than average on knowledge of Excel, knowledge of at least one statistical software package, conducting performance reviews, data quality assessment, and assessing service readiness. For all the remaining tools and concepts they rated themselves below average.

Pre-evaluation results showed that some of the main expectations from the workshop included: 1) improved analysis capacity; 2) learning use of new tools and their applications in-country; 3) learn how to better use available data; 4) learn how to assess performance; 5) share knowledge and network with other participants.

Each workshop session was evaluated for the overall usefulness, the duration, the level of difficulty, the usefulness of the presentation/materials, and the usefulness of the facilitators and exercises. The items were scaled from 1 to 5 with 1 indicating negative feedback and 5 indicating positive feedback. Figures 3-8 in Annex C compare the distribution of each criteria over the various tools/concepts. Most tools and concepts scored high on their usefulness. The tools and concepts that are still in work in progress such as DQAA and Value for Money scored lower on their usefulness. The responses to duration, level, presentation materials, exercises and facilitators were varied based on a specific tool/concept.

Participants were given a self-assessment of knowledge and skills questionnaire post-evaluation to compare with their pre-evaluation self assessment scores. The results of the post-evaluation self-assessment are shown in Figures 9-11 in Annex C. Results of the pre- and post- workshop self-assessment were compared. Participants uniformly gave themselves higher self-assessment scores after the workshop compared to pre-workshop self assessment.

Participants were also asked to evaluate the workshop on the overall usefulness, duration, level and expectations. The items were scaled from 1 to 5 with 1 indicating a negative opinion and 5 indicating a positive opinion. The overall usefulness of the workshop was rated high with a mean score of 4.5 (4.3, 4.8). The appropriateness of the duration of the workshop was rated slightly lower at 4.1 (3.8,4.4) though 43% of the participants indicated the workshop was a little too short. Participants were also asked if the workshop met with their expectations and the mean score was 3.9 (3.7, 4)-- that is, participants thought the workshop mostly met their expectations.

## **Recommendations and next steps**

Many participants felt the time allocated for this workshop was too short to cover the tools in a comprehensive manner. Suggestions were made either to increase the length of the workshop or reduce the number of tools to look at a selected few in more detail. Also many participants recommended more interactive practice time with tools to learn how to use them effectively. There were also some recommendations on provision of more information on how to better link the tools with national health sector reviews.

Participants indicated the need to strengthen in-country capacity for data assessment and analysis through in-country training and follow-up work. While most of the tools were considered useful, the participants recognized the need to select tools according to country needs. Some of the tools that were selected as the most useful to be applied in country were CME, LiST, HDCalc for equity analysis, RDQA, performance assessment tool, and EPP/Spectrum. Participants also commented on the need to concentrate on a fewer number of tools, spend more time on the tools and thus eliminate the need to have parallel market place sessions.

Participants also suggested that more information needs to be included on best practices in health sector reviews and suggested a template for such reviews be developed as the structure around which to present the various tools.

Participants requested the creation of a network/community where they could be kept informed of new developments. A CHeSS website including key documents, workshop presentations and other information is currently under construction. Information included on this website will include material from the Nairobi workshop (12-16<sup>th</sup> April 2010) as well as the more recent Cape Town workshop. It is planned to be operational by the end of 2010. Participants and other key stakeholders will be informed when the website is launched.

Some of the tools and concepts that are still under development will continue to be developed further and with in-country testing and inputs. A number of the tools have already been translated into different languages but efforts will continue to translate other tools and documentation into other languages, notably French and Spanish.

Lastly, as a result of the physical setup of the plenary room many participants sitting in the back and side of the room had a difficult time seeing materials presented on the main screen. A recommendation was that facilitators either use bigger font in their presentations or share the presentations in advance with the participants so that they can follow along on their personal computers.

Overall, the workshop turned out to be a very new and innovative approach for countries as well as for coordination within WHO and with other partner institutions. Further to the recommendations put forward by country participants, a number of follow-up actions were suggested by facilitators and partner institutions.

1. The network/community should be animated from the WHO Regional Offices through the WHO Country Offices with strong support from HQ and other facilitators;
2. The information presented in the CHeSS website should feed into the Regional and Global Health Observatories;
3. The aim would be to increase regional expertise by transferring skills and tools across regions and countries in order to strengthen capacity widely (i.e. concept of "Train the trainer");
4. The involvement of the WHO Regional Offices and country offices in the process and more facilitators from other organizations, e.g. UNICEF, UNFPA and the World Bank is crucial towards the sustainability of the efforts;
5. The improvement and finalization of existing tools and inclusion of other tools not yet considered is crucial i.e. Civil Registration and Vital statistics tools that use ICD10;
6. There is need to rely more heavily on country data and request countries prior to the workshop to bring their data in the required format relevant for the tools and exercises so that they can work on their own data and have some real country examples to show upon their return, applying the tools;

7. The selection of tools by participants prior to the workshop could be envisaged for future workshops as there is clearly different needs and interests among country participants.

## Annex A: Workshop list of participants

### List of Participants

#### COUNTRY PARTICIPANTS

##### Angola

Seydou COULIBALY  
Health Economist  
WHO Angola

Email: [coulibalys@ao.afro.who.int](mailto:coulibalys@ao.afro.who.int)

Manuel Vindo LACO  
Ministry of Health

Email: [mvlaco7@hotmail.com](mailto:mvlaco7@hotmail.com)

##### Botswana

Mary LESOLE  
Ministry of Health

Email: [mnlesole@gov.bw](mailto:mnlesole@gov.bw)

Edloren TACHINYUNYI  
Ministry of Health

Email: [edtachinyunyi@gov.bw](mailto:edtachinyunyi@gov.bw);  
[edlorentach@yahoo.com](mailto:edlorentach@yahoo.com)

##### Gambia

Momodou CEESAY  
Health Economist  
WHO Gambia

Email: [ceesaym@gm.afro.who.int](mailto:ceesaym@gm.afro.who.int)

Musa SOWE  
Acting Manager  
Health Information Management System  
Ministry of Health and Social Welfare

Email: [musammmsowe@yahoo.co.uk](mailto:musammmsowe@yahoo.co.uk)

Baba SUWAREH  
Director, Social Statistics  
Gambia Bureau of Statistics

Email: [babasuwareh@yahoo.co.uk](mailto:babasuwareh@yahoo.co.uk)

##### Ghana

Selassi A. D'ALMEIDA  
NPO/HEC  
WHO Ghana

Email: [dalmeidas@gh.afro.who.int](mailto:dalmeidas@gh.afro.who.int)

Dakpallah Fidelis GEORGE  
PPME  
Ministry of Health

Email: [gdakpala@yahoo.com](mailto:gdakpala@yahoo.com)

Emmanuel OWUSU-ANSAH  
Acting Head, M&E  
Policy Planning Monitoring and  
Evaluation Division  
Ministry of Health

Email: [owusuansah@hotmail.com](mailto:owusuansah@hotmail.com)

**Lesotho**

Esther ACENG  
TB/HIV Officer  
WHO Lesotho

Email: [acenge@ls.afro.who.int](mailto:acenge@ls.afro.who.int)

John NKONYANA  
Epidemiologist  
Ministry of Health and Social Welfare

Email: [nkonyanaj@health.gov.ls](mailto:nkonyanaj@health.gov.ls)

Mahlape RAMOSEME  
Chief Statistician  
Ministry of Health and Social Welfare

Email: [ramosemem@health.gov.ls](mailto:ramosemem@health.gov.ls)

**Liberia**

Augustine FAYIAH  
Coordinator County Statistics and Information  
Offices  
Liberia Institute of Statistics and Geo-  
Information Services (LISGIS)

Email: [gusfayiah@yahoo.com](mailto:gusfayiah@yahoo.com)

Eric JOHNSON  
National Professional Officer  
WHO Liberia

Email: [johnsone@lr.afro.who.int](mailto:johnsone@lr.afro.who.int)

C. Sanford WESSEH  
Assistant Minister for Statistics  
Ministry of Health and Social Welfare

Email: [cswesseh@yahoo.com](mailto:cswesseh@yahoo.com)

**Mozambique**

Baltazar CHILUNDO  
Faculty of Medicine/UEM

Email: [chilubal@health.uem.mz](mailto:chilubal@health.uem.mz)

Pedro DUCE  
National Institute for Statistics

Email: [pedro.duce@ine.gov.mz](mailto:pedro.duce@ine.gov.mz)  
[pedro.duce@gmail.com](mailto:pedro.duce@gmail.com)

Sebastiao NKUNKU  
Medical Officer  
WHO Mozambique

Email: [nkunkus@mz.afro.who.int](mailto:nkunkus@mz.afro.who.int)

Eva PASCOAL  
National Professional Officer  
WHO Mozambique

Email: [pascoale@mz.afro.who.int](mailto:pascoale@mz.afro.who.int)

Cesarino TIVANE  
Ministry of Health

Email: [tivanecesarino@gmail.com](mailto:tivanecesarino@gmail.com)

**Namibia**

Hilma NANGOMBE  
Head of Management Information and  
Research  
Ministry of Health and Social Services

Email: [hnangombe@mhss.gov.na](mailto:hnangombe@mhss.gov.na)

Sapalov Tuleingepo QUITA  
Chief Statistician  
Central Bureau of Statistics

Email: [squita@npc.gov.na](mailto:squita@npc.gov.na)

**Nigeria**

Ogochukwu CHUKWUJEKWU  
National Professional Officer  
WHO Nigeria

Email: [Chukwujekwuo@ng.afro.who.int](mailto:Chukwujekwuo@ng.afro.who.int)

Klint NYAMURYEKUNG'E  
Project Manager  
WHO Nigeria

Email: [NyamuryekungeK@ng.afro.who.int](mailto:NyamuryekungeK@ng.afro.who.int)

Obinna ONWUJEKWE  
Associate Professor  
University of Nigeria

Email: [onwujekwe@yahoo.co.uk](mailto:onwujekwe@yahoo.co.uk)

M.O. SALAMI  
Associate Director  
National Bureau of Statistics

Email: [mosalami\\_nbs@yahoo.com](mailto:mosalami_nbs@yahoo.com)

**Sierra Leone**

Issa FOFANA  
Njala University

Email: [issa\\_fofana@hotmail.com](mailto:issa_fofana@hotmail.com)

Teniin GAKURUH  
Health Systems Specialist  
WHO Sierra Leone

Email: [gakuruht@sl.afro.who.int](mailto:gakuruht@sl.afro.who.int)

Edward MAGBITY  
Deputy Director  
Ministry of Health & Sanitation

Email: [magbity@gmail.com](mailto:magbity@gmail.com)

**South Africa**

Debbie BRADSHAW  
Medical Research Council

Email: [Debbie.Bradshaw@mrc.ac.za](mailto:Debbie.Bradshaw@mrc.ac.za)

M. Ali DHANSAY  
Vice-President: Research  
Medical Research Council

Email: [ali.dhansay@mrc.ac.za](mailto:ali.dhansay@mrc.ac.za)

Demetre LABADARIOS  
Executive Director  
Human Sciences Research Council

Email: [dlabadarios@hsrc.ac.za](mailto:dlabadarios@hsrc.ac.za)

Thabang MOSALA  
Director Epidemiology & Surveillance  
Ministry of Health

Email: [mosalt@health.gov.za](mailto:mosalt@health.gov.za)

Email: [opatah@za.afro.who.int](mailto:opatah@za.afro.who.int)

Harry OPATA  
Medical Officer  
WHO South Africa

Gavin REAGON  
Senior Lecturer  
University of the Western Cape  
School of Public Health

Email: [greagon@uwc.ac.za](mailto:greagon@uwc.ac.za)

**Swaziland**

Sifiso MAVUSO  
Planning, M&E Officer  
Ministry of Health & Social Welfare

Email: [cyprianmavuso@yahoo.com](mailto:cyprianmavuso@yahoo.com)

Nombulelo DLAMINI  
Statistician  
Central Statistics Office

Email: [ncamlelo@yahoo.com](mailto:ncamlelo@yahoo.com)

Morrison MKHONTA  
WHO Swaziland

Email: [mkhontam@sz.afro.who.int](mailto:mkhontam@sz.afro.who.int)

**Zimbabwe**

Khoti GAUSI  
Malaria M&E Expert  
WHO Zimbabwe

Email: [GausiK@zw.afro.who.int](mailto:GausiK@zw.afro.who.int)

Patrick HAZANGUE  
Ministry of Health and Child Welfare

Email: [patrickhazangue@gmail.com](mailto:patrickhazangue@gmail.com)

Stanley Munyaradzi MIDZI  
MPN Officer  
WHO Zimbabwe

Email: [midzis@zw.afro.who.int](mailto:midzis@zw.afro.who.int)

Tinashe MWADIWA  
Bureau of Statistics

Email: [tmwadiwa@gmail.com](mailto:tmwadiwa@gmail.com)

Gerald SHAMBIRA  
Academic Institution

Email: [gshambira@yahoo.com](mailto:gshambira@yahoo.com)

**African Population & Health Research Center (APHRC)**

Remare ETTARH

Email: [rettarh@aphrc.org](mailto:rettarh@aphrc.org)

Akaco EKIRAPA

Email: [aekirapa@aphrc.org](mailto:aekirapa@aphrc.org)

**CDC**

Chung-won LEE  
Lead, Strengthening the Quality and Use  
of Immunization Data (SQUID) Team

Email: [cwl4@cdc.gov](mailto:cwl4@cdc.gov)

**GAVI Alliance**

Deblina DATTA

Email: [DDatta@gavialliance.org](mailto:DDatta@gavialliance.org)**Health Systems Trust (HST)**

Candy DAY

Email: [candy@hst.org.za](mailto:candy@hst.org.za)

Information Dissemination

**ICF Macro International**

Soumya ALVA

Email: [salva@icfi.com](mailto:salva@icfi.com)

Ani HYSLOP

Email: [ahyslop@icfi.com](mailto:ahyslop@icfi.com)

M&amp;E Specialist

Kate JACKSON

Email: [catherinelouisejackson@gmail.com](mailto:catherinelouisejackson@gmail.com)

Donna PODEMS

Email: [dpodems@icfi.com](mailto:dpodems@icfi.com)**John Snow, Inc. (JSI)**

Anzel SCHÖNFELDT

Email: [anzel@enhancesi.co.za](mailto:anzel@enhancesi.co.za)

Technical Specialist: Data Quality

Expanded Strategic Information (ESI)

Project

**Save the Children/US**

Erica CORBETT

Email: [ericacorbett@gmail.com](mailto:ericacorbett@gmail.com)

Kate KERBER

Email: [kikerber@gmail.com](mailto:kikerber@gmail.com)

Mary KINNEY

Email: [mvkinney@gmail.com](mailto:mvkinney@gmail.com)

Joy LAWN

Email: [joylawn@yahoo.co.uk](mailto:joylawn@yahoo.co.uk)

Jon RHODE

Email: [jrohde@msh.org](mailto:jrohde@msh.org)**The Global Fund to Fight AIDS, Tuberculosis, and Malaria (GFATM)**

Seyed Mehran HOSSEINI

Email: [mehran.hosseini@theglobalfund.org](mailto:mehran.hosseini@theglobalfund.org)

Performance, Impact and

Effectiveness Unit

Estifanos Biru SHARGIE

Email: [estifanos.shargie@theglobalfund.org](mailto:estifanos.shargie@theglobalfund.org)

Performance, Impact and

Effectiveness Unit

**UNICEF**

Danzhen YOU

Email: [dyou@unicef.org](mailto:dyou@unicef.org)

Statistics and Monitoring Specialist

**WHO**

Carla Standing ABOU-ZAHR  
Department of Health Statistics and  
Informatics

Email: [abouzahr.carla@gmail.com](mailto:abouzahr.carla@gmail.com)

Ana BIERRENBACH  
Consultant  
Department of Health Statistics and  
Informatics

Email: [albierrenbach@yahoo.com.br](mailto:albierrenbach@yahoo.com.br)

Ties BOERMA  
Department of Health Statistics and  
Informatics

Email: [boermat@who.int](mailto:boermat@who.int)

Jesus Maria Garcia CALLEJA  
Department of HIV/AIDS

Email: [callejai@who.int](mailto:callejai@who.int)

Tessa EDEJER  
Costs, Effectiveness, Expenditure  
and Priority Setting  
Department of Health Systems  
Financing

Email: [tantorrest@who.int](mailto:tantorrest@who.int)

Fiona GORE  
Mortality and Burden of  
Disease  
Department of Health Statistics  
and Informatics

Email: [goref@who.int](mailto:goref@who.int)

Ahmadreza HOSSEINPOOR  
Statistics Monitoring and  
Analysis  
Department of Health Statistics  
and Informatics

Email: [hosseinpoora@who.int](mailto:hosseinpoora@who.int)

Patrick KADAMA  
Health System Governance, Policy and  
Aid Effectiveness  
Department of Health Policy,  
Development and Services

Email: [kadamap@who.int](mailto:kadamap@who.int)

William SOUMBAY-ALLEY  
Regional Office for Africa

Email: [soumbeye@afro.who.int](mailto:soumbeye@afro.who.int)

Kavitha VISWANATHAN  
Department of Health Statistics and  
Informatics

Email: [viswanathanka@who.int](mailto:viswanathanka@who.int)

## Annex B: Workshop final agenda

Session	Topic	Mode	Responsible
<b>Monday, 11 October 2010</b>			
<b>1</b>	<b>Introduction, objectives and framework</b> <i>What are the critical elements of a country platform for M&amp;E of the national health strategy?</i>		
8.30 - 10.00	General introduction and objectives	Presentation	WHO & participants
10.00 - 10.30	COFFEE BREAK		
10.30 - 12.30	Comprehensive framework for health progress and performance reviews with indicators	Presentation, Group and plenary discussion	Ties Boerma & Carla Abou-Zahr (WHO)
<b>2</b>	<b>General epidemiological context</b> <i>Setting the stage for health progress and performance reviews: what is the overall burden of disease and prevalence of risk factors in the country?</i>		
14.00 - 14.30	National Burden of Disease (NBD) and Risk Factors & Mortality statistics	Presentation	Fiona Gore (WHO), Carla Abou-Zahr (WHO), Remare Ettarh (APHRC)
14.30 - 15.00	NBD	Practice with NBD tool	Participants
15.00 - 15.30	COFFEE BREAK		
15.30 - 17.30	NBD	Practice with NBD tool	Participants
18.00 - 20.00	RECEPTION - BALLROOM REST ROOM		

**Tuesday, 12 October 2010**

8.30 - 9.00 Review of previous day

**3**  
**Inputs and outputs**  
***What is the situation and progress regarding resources, money and health workers, and are service access and readiness improving?***

9.00 - 10.00	Current practices in countries	Group session 1 Plenary feedback	Participants
10.00 - 10.30	COFFEE BREAK		
10.30 - 11.00	Brief overview of methods and tools		Facilitators
11.00 - 12.30	<input type="checkbox"/> Health financing	Market place	Tessa Edejer (WHO)
	<input type="checkbox"/> Service readiness & quality	Market place	William Soumbey-Alley & Ties Boerma (WHO)
12.30 - 14.00	LUNCH BREAK		

**4**  
**Coverage of interventions:**  
***How good is the quality of the facility data (HMIS) and can they be used for coverage trend estimates, with or without the help of survey data?***

14.00 - 14.45	Current practices in countries	Group session 2	Participants
14.45 - 15.00	Facility data quality assessment and adjustment (DQAA) and coverage	Overview	Kavitha Viswanathan (WHO) & Patrick Shabangu, Anzel Schonfeldt (JSI)
15.00 - 15.30	COFFEE BREAK		
15.30 - 17.30	<input type="checkbox"/> DQAA: immunization coverage	Market place	Kavitha Viswanathan (WHO)
	<input type="checkbox"/> RDQA verification	Market place	Anzel Schonfeldt & Patrick Shabangu (JSI)

**Wednesday, 13 October 2010**

8.30 - 9.00

Review of previous day

**5**

**Estimation of key health impact indicators**

*What is the progress in the main health impact indicators for the MDGs?*

9.00 - 9.30

Overview of methods and tools

Short introduction for each session (5 min each)

All Facilitators

9.30 - 12.30

- Child mortality estimation
- Tuberculosis estimation
- Maternal mortality assessment
- HIV/AIDS (EPP + Spectrum)

Market place

Danzhen You (UNICEF)

Market place

Ana Bierenbach (WHO)

Market place

Carla Abou-Zahr (WHO)

Market place

Txema Calleja (WHO)

12.30 - 14.00

LUNCH

14.00 - 15.30

- Lives saved tool (LiST)

Presentation of methods and tool

Jon Rohde, Mary Kinney, Kate Kerber (Save the Children)

15.30 - 16.00

COFFEE BREAK

16.00 - 17.30

Practice with LiST tool

**Thursday, 14 October 2010**

8.30 - 9.00 Review of previous day session

**6****Equity analyses*****How can we assess levels and progress and system performance towards equity goals?***

9.00 - 9:30	Current practices in countries	Group session 3	Participants
9:30 - 10.30	Equity analysis	Presentation & tool	Ahmad Hosseinpoor (WHO)
10:30- 11:00	COFFEE BREAK		
11.00 - 12.30		Practice with tool	Participants
12.30 - 14.00	LUNCH		

**7****Overall quantitative performance assessment:*****How can we benchmark country performance, assess efficiency, and use indices?***

14:00 - 15.30	Country performance assessment	Presentations	Ties Boerma (WHO); Global Fund
		Practice with tool	Participants
15.30 - 16.00	COFFEE BREAK		
16.00 - 17.30		Practice with tool (continued)	Participants

**Friday, 15 October 2010**

8.30 - 9.00 Review of previous day

**8****Policies and value for money*****What can policy analysis and cost-effectiveness analysis contribute to the reviews and planning?***

9.00 - 10.00 Policy analysis Presentation and discussion Patrick Kadama & Mohamed Dramé (WHO)

10:00 - 10:30 COFFEE BREAK

10.30 - 11.30 Value for Money Presentation using TB and malaria examples Discussion Mehran Hosseini (Global Fund)

11.30 - 12.30 Evaluation and way forward

12.30

13.00 - 14.00 LUNCH BREAK

**9****Communication of data and way forward**

14.00 - 14.30 Tips and Tricks on communicating data effectively: examples of do and don't Presentation Candy Day (Health Systems Trust)

14.30 - 15.30 Country Practices on Communicating data Interactive poster session by countries Participants

**15.30 - 16.00 Closure**

ANNEX C

Figure 1: Mean score in the pre-workshop self-assessment of knowledge and skills by tool/concept

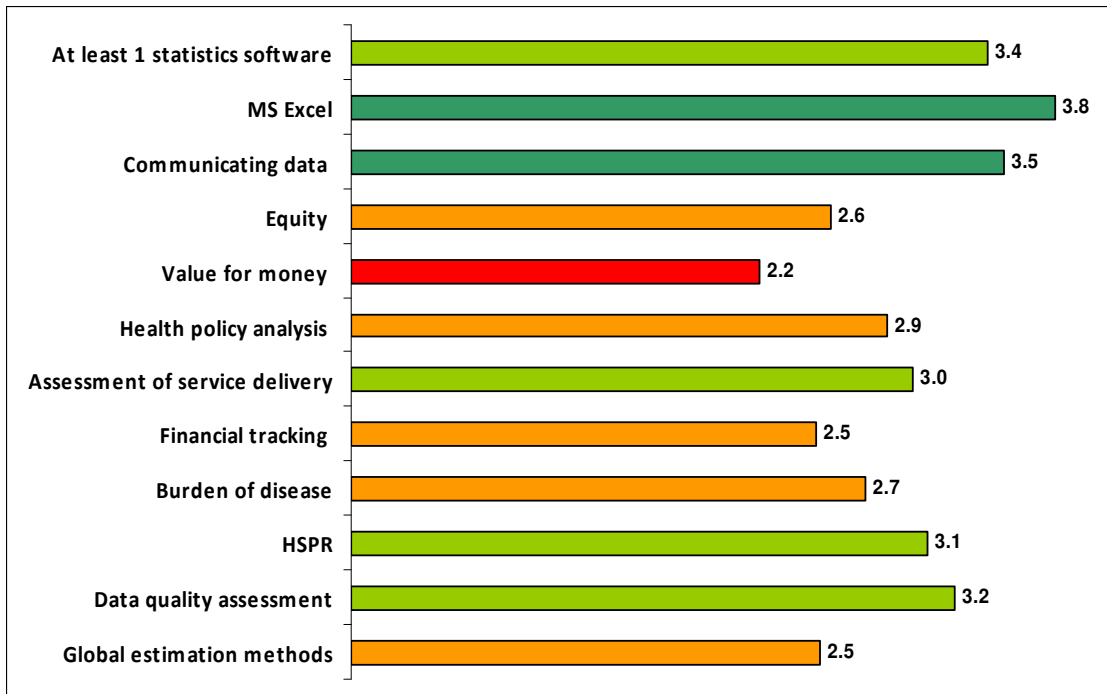


Figure 2: Distribution of scores in the pre-workshop self-assessment of knowledge and skills by tool/concept

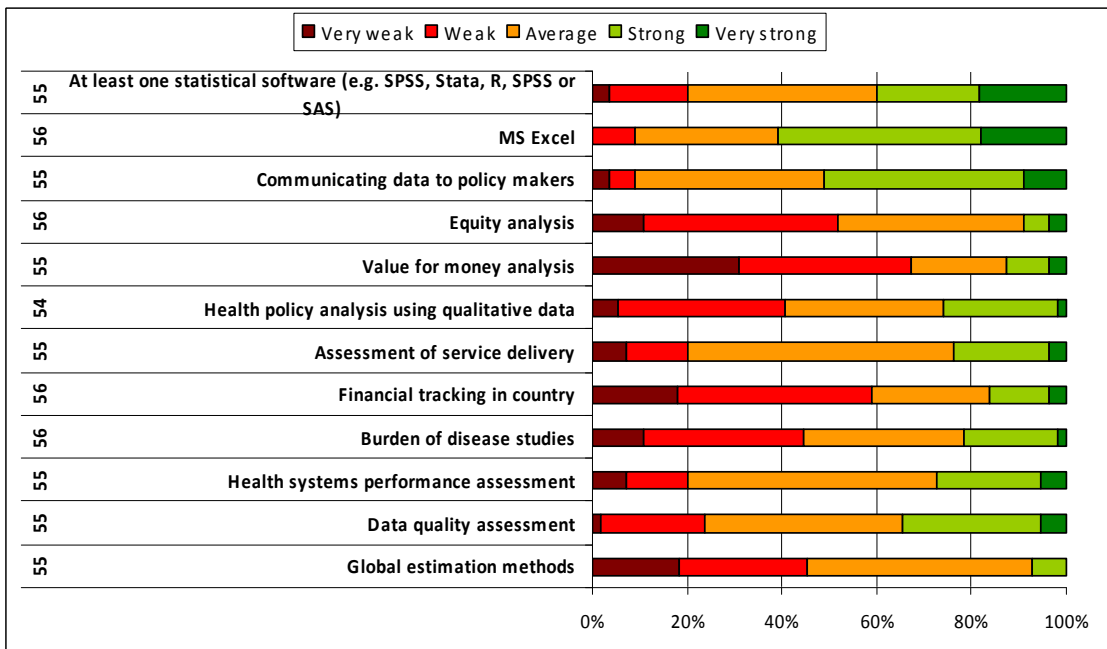


Figure 3: Usefulness of session

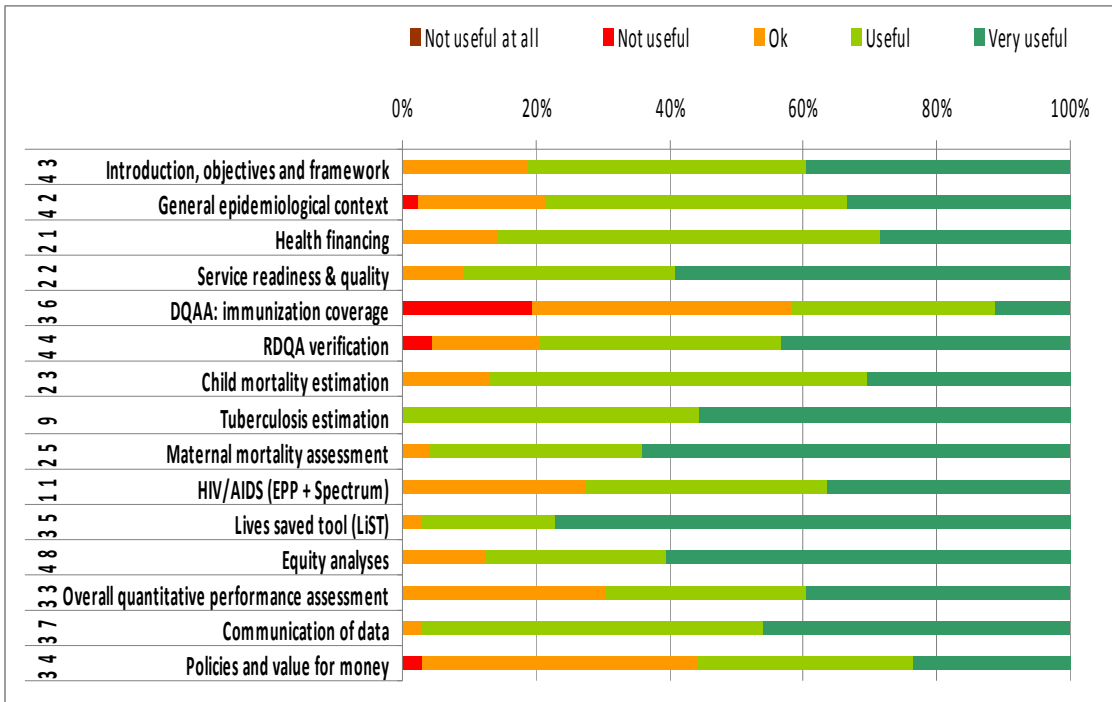


Figure 4: Duration of session

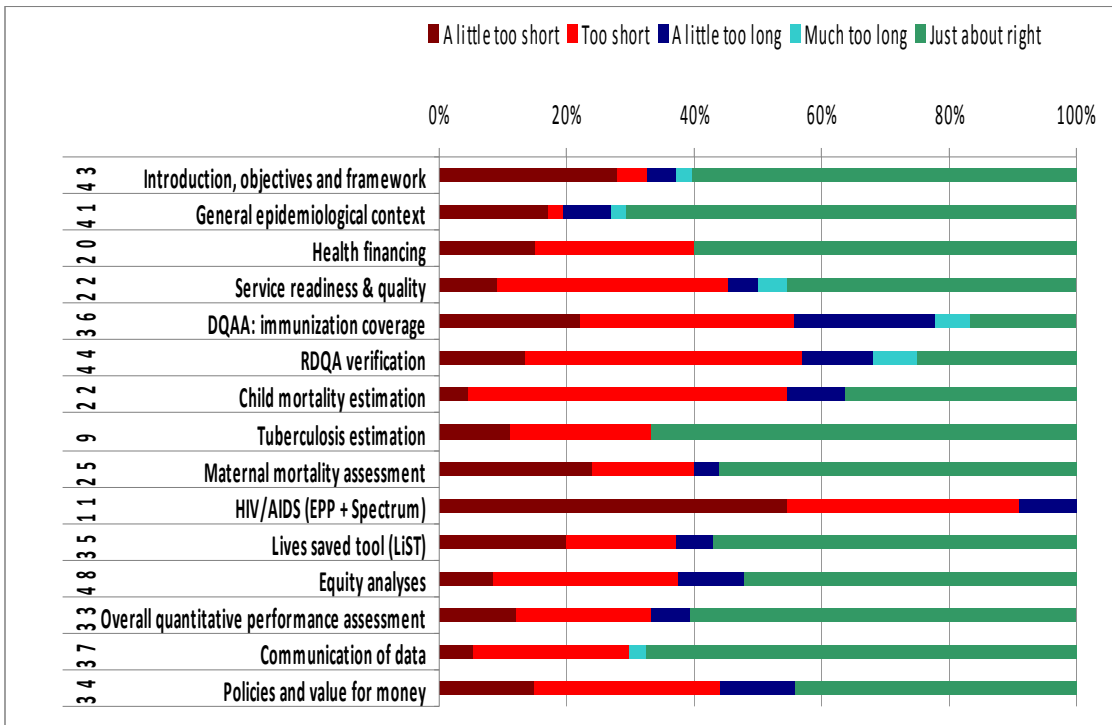


Figure 5: Level of session

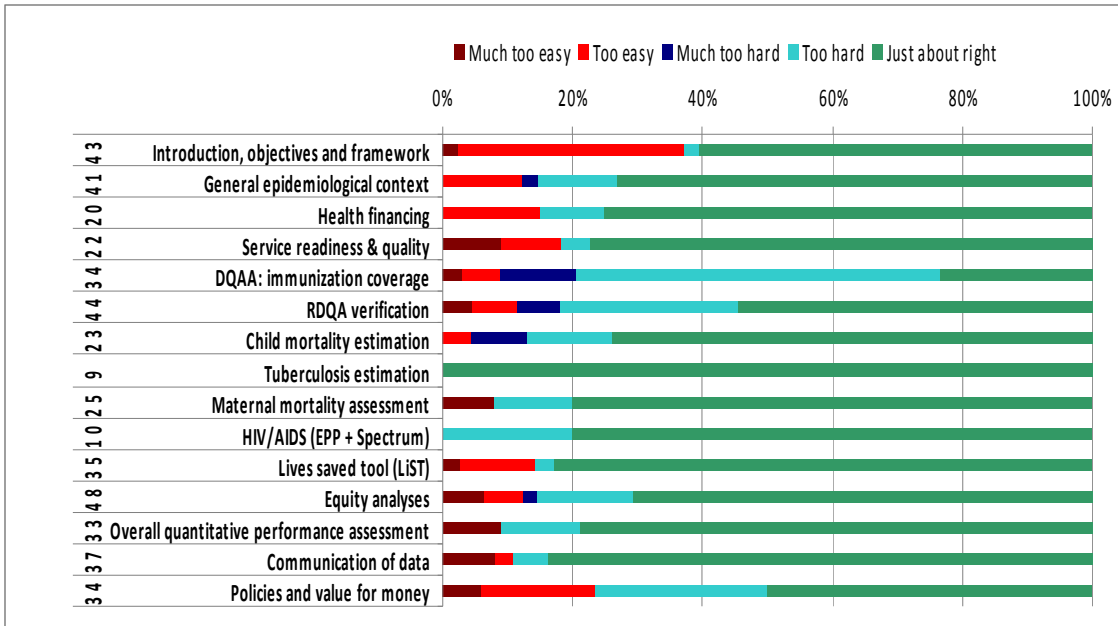


Figure 6: Presentation and materials

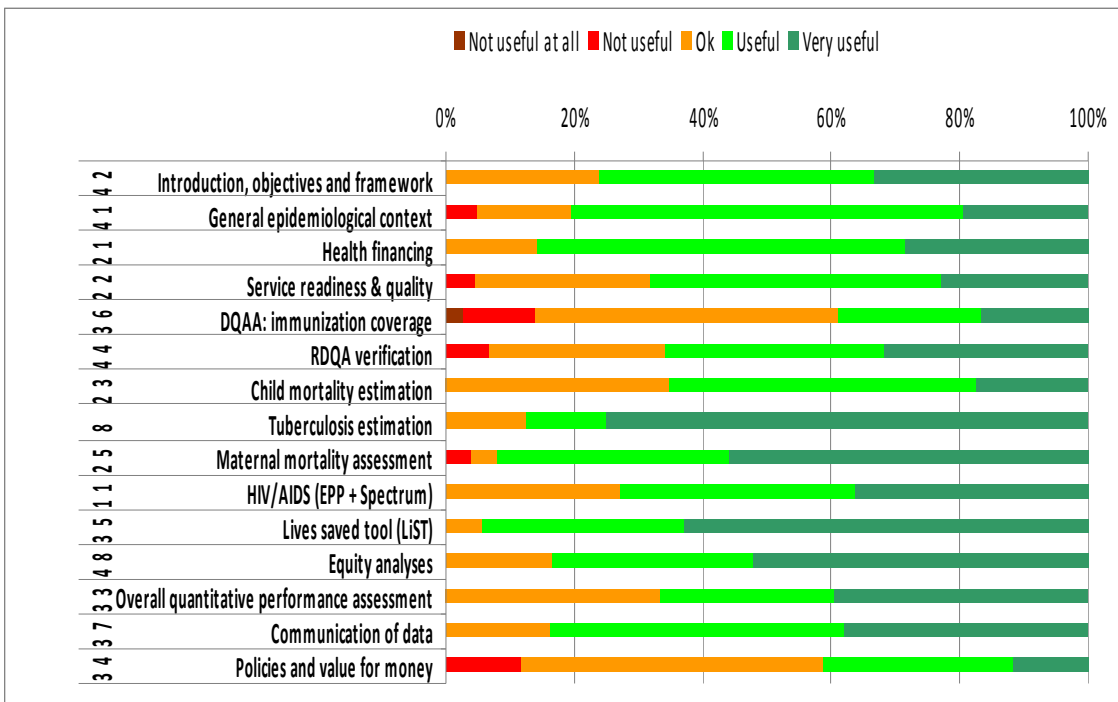


Figure 7: Exercises

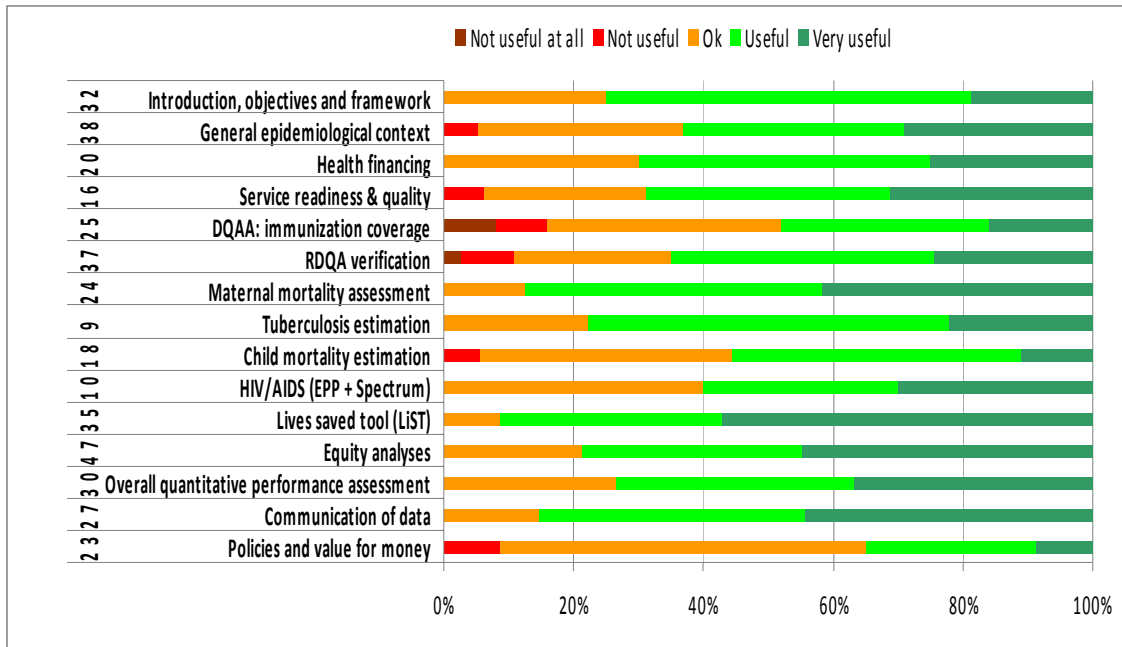
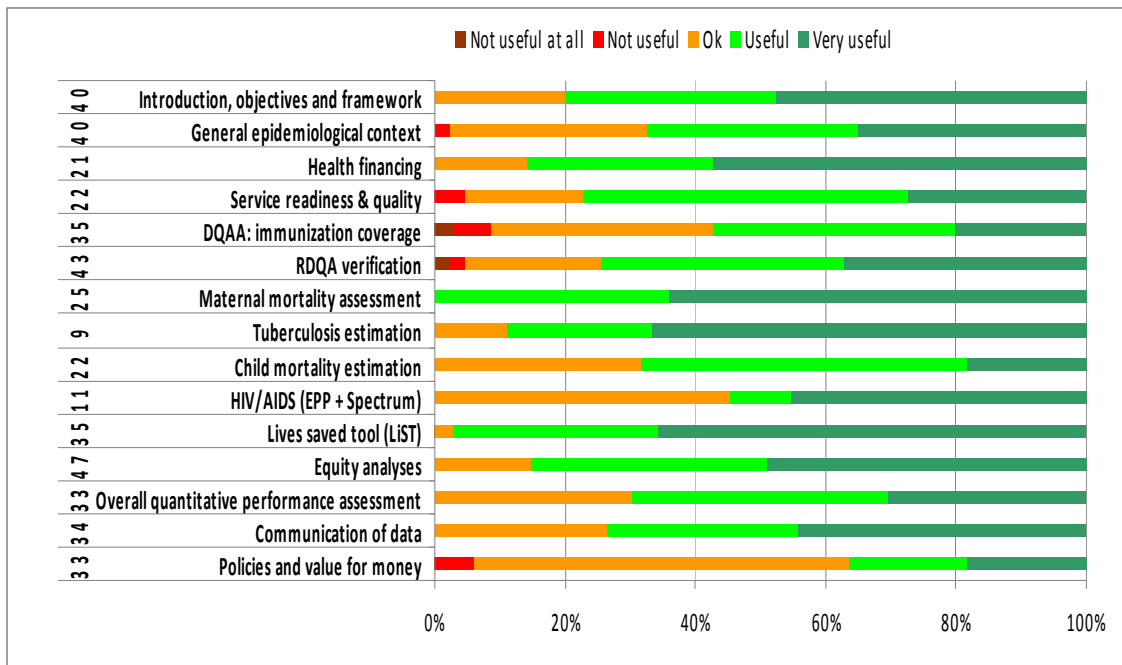
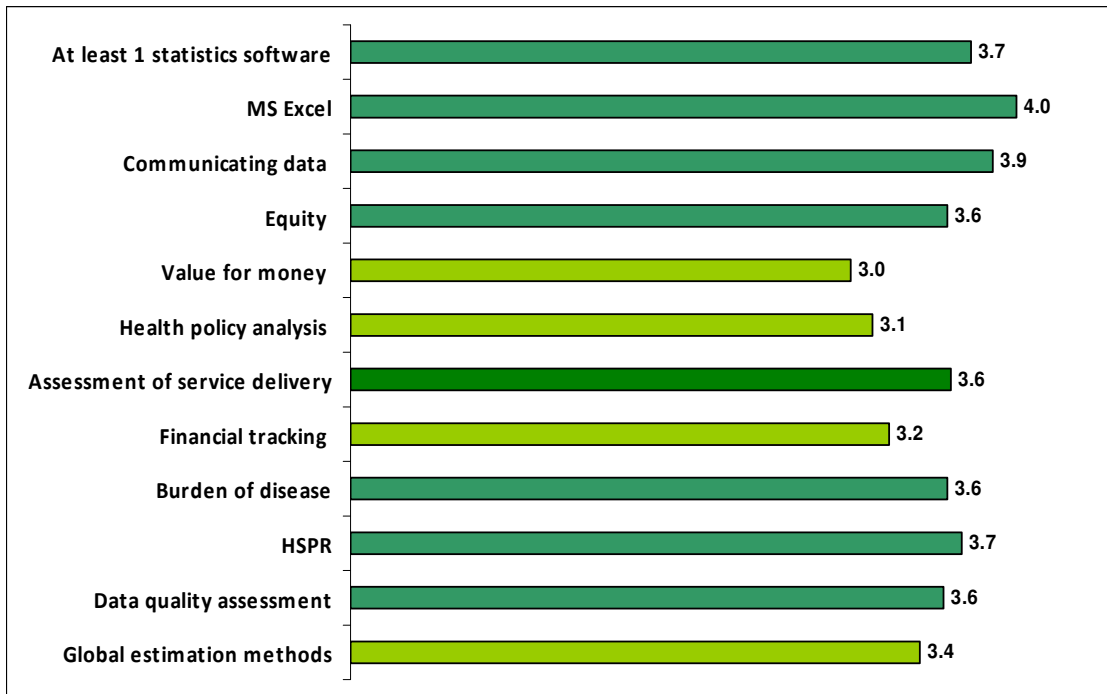


Figure 8: Facilitators' role



**Figure 9: Mean score in the post-workshop self-assessment of knowledge and skills by tool/concept**



**Figure 10: Percentage distribution of scores in the post-workshop self-assessment of knowledge and skills by tool/concept**

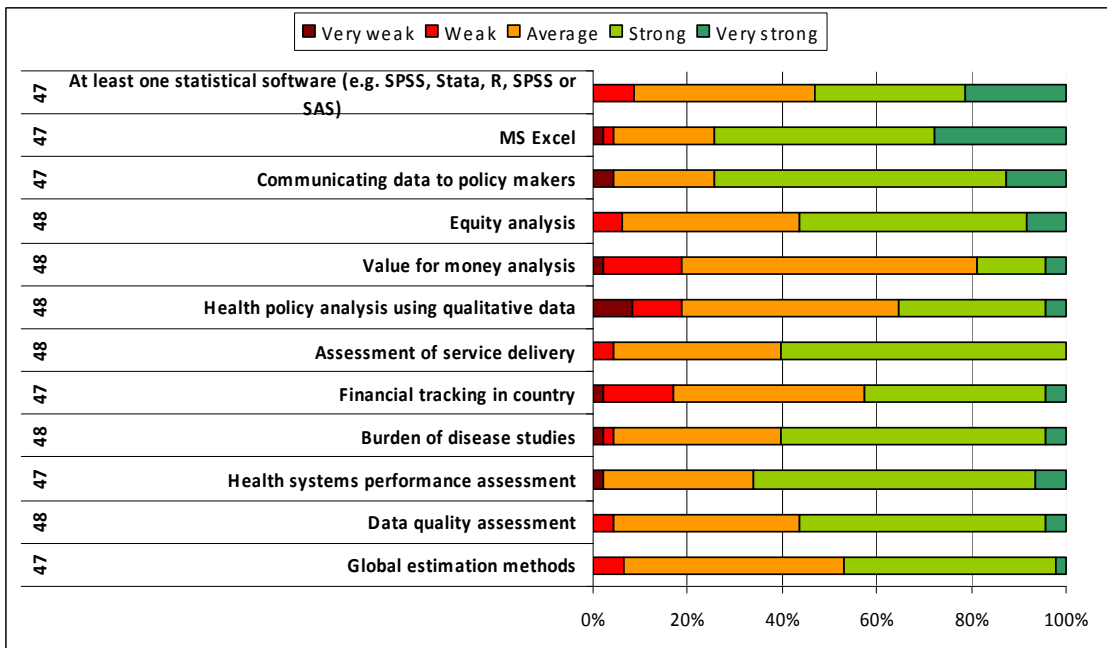


Figure 11: Comparison of pre-workshop and post-workshop self assessment

